

Purified Anti-Mouse CD18 Antibody[M18/2], Functional Grade

catalog number: E-AB-F11130

Note: Centrifuge before opening to ensure complete recovery of vial contents.

Description

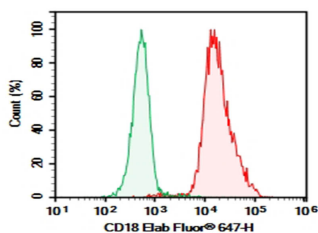
Reactivity	Mouse
Immunogen	Recombinant Mouse CD18 protein
Host	Rat
Isotype	Rat IgG2a, κ
Clone	M18/2
Purification	>98%, Protein A/G purified
Buffer	Sterile PBS, pH 7.2. < 1.0 EU per mg of the antibody as determined by the LAL method.

Applications

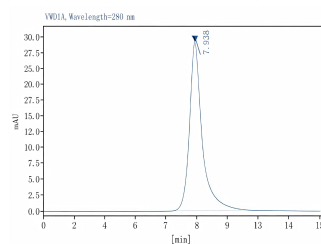
Recommended Dilution

FCM	2 µg/mL (0.5×10 ⁶ -1×10 ⁶ cells)
Neut	Reported in the literature

Data



C57/BL6 Mouse splenocytes were stained with 0.2 µg Purified Anti-Mouse CD18 Antibody[M18/2], Functional Grade (Right) and 0.2 µg Rat IgG2a, κ Isotype Control (Left), followed by Elab Fluor® 647-conjugated Goat Anti-Rat IgG Secondary Antibody.



Monomer purity ≥95% as determined by analytical size-exclusion chromatography (SEC)

Preparation & Storage

Storage	Store at 4°C valid for 12 months or -20°C valid for long term storage, avoid freeze / thaw cycles. This preparation contains no preservatives, thus it should be handled under aseptic conditions.
Shipping	Ice bag

Background

CD18 is a 95 kD protein, also known as integrin β2 subunit. It is expressed on all leukocytes. CD18, in association with integrin α chain CD11a, CD11b, and CD11c forms LFA-1, Mac-1, and αXβ2, respectively, and plays an important role in leukocytes adhesion. The CD18 integrin complexes bind ICAM-1 (CD54), ICAM-2 (CD102), ICAM-3 (CD50), iC3b, and fibrinogen. The M18/2 antibody is able to block tumor cell metastasis and enhance cell adhesion.

None (Azide-Free, Low Endotoxin) are perfectly suited to be used in culture or in vivo (for nonhuman studies) for functional assays blocking, neutralizing, activation or depletion where the presence of azide may damage cells or exogenous endotoxin may signal or activate cells.

Application References

For Research Use Only

Wenyan He, et al. Immunity. 2018 Dec 18;49(6):1175-1190.e7.

For Research Use Only

Toll-free: 1-888-852-8623
Web: www.elabscience.com

Tel: 1-832-243-6086
Email: techsupport@elabscience.com

Fax: 1-832-243-6017

Rev. V2.6